



NOTICE TO RESIDENTS NEAR OLD DOMINION DRIVE BRIDGE IN MCLEAN

Pile Driving for the I-495 Bridge over Scott's Run Planned to Continue Intermittently through Mid-February

I-495 Express Lanes Northern Extension (495 NEXT) Project

What's Happening?

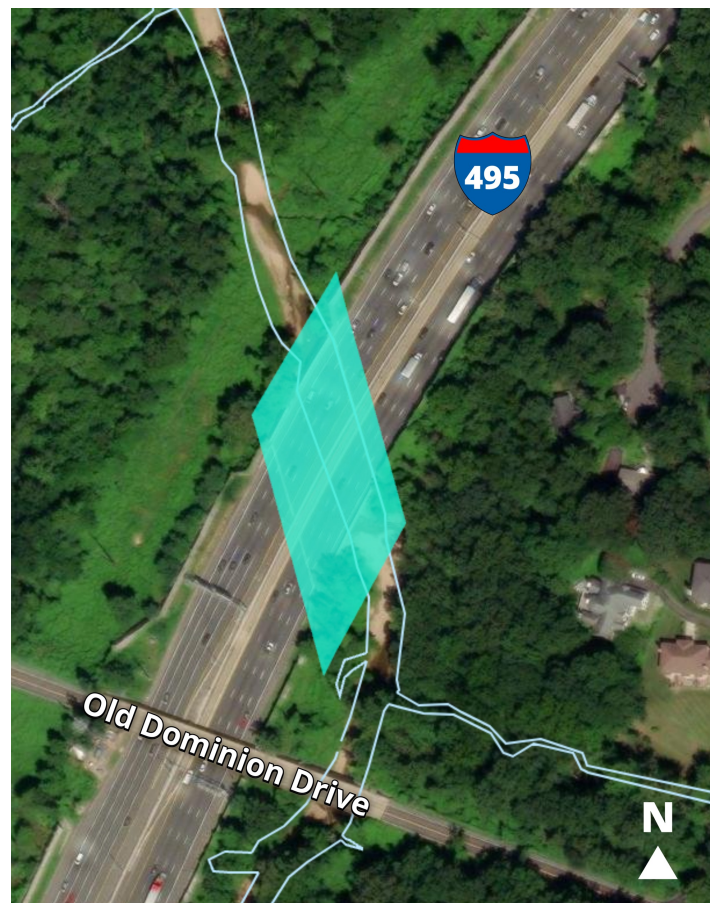
Pile driving for the abutments and center piers of the new Beltway bridge over Scott's Run began Thursday, January 11, and is planned to continue intermittently through mid-February. Scott's Run passes under the Beltway approximately 200 feet north of the Old Dominion Drive Beltway overpass.

Pile driving will occur in six individual locations in this area, so the associated noise will be experienced intermittently during this period, as equipment is moved to the subsequent locations.

What Should Neighbors Expect?


Pile driving involves hammering steel piles into the ground to support the foundation of the future bridge. When active, neighbors will hear hammer strikes every few seconds. Pile driving will occur during daytime hours, Monday through Friday, with Saturday pile driving possible depending upon work progress.

All construction work is dependent on weather conditions and other factors.




Pile driving will occur in six locations in order to build the new I-495 bridge over Scott's Run shown in teal.

Stay Connected

 495NorthernExtension@VDOT.Virginia.gov

 John Undeland, Lane Construction: 703-785-3461
Construction Information Line: 703-592-6430

 495NEXT.org

 /  @VaDOTNOVA

 Virginia Department of Transportation

 /groups/vdotnova



SIGN UP FOR
PROJECT EMAILS